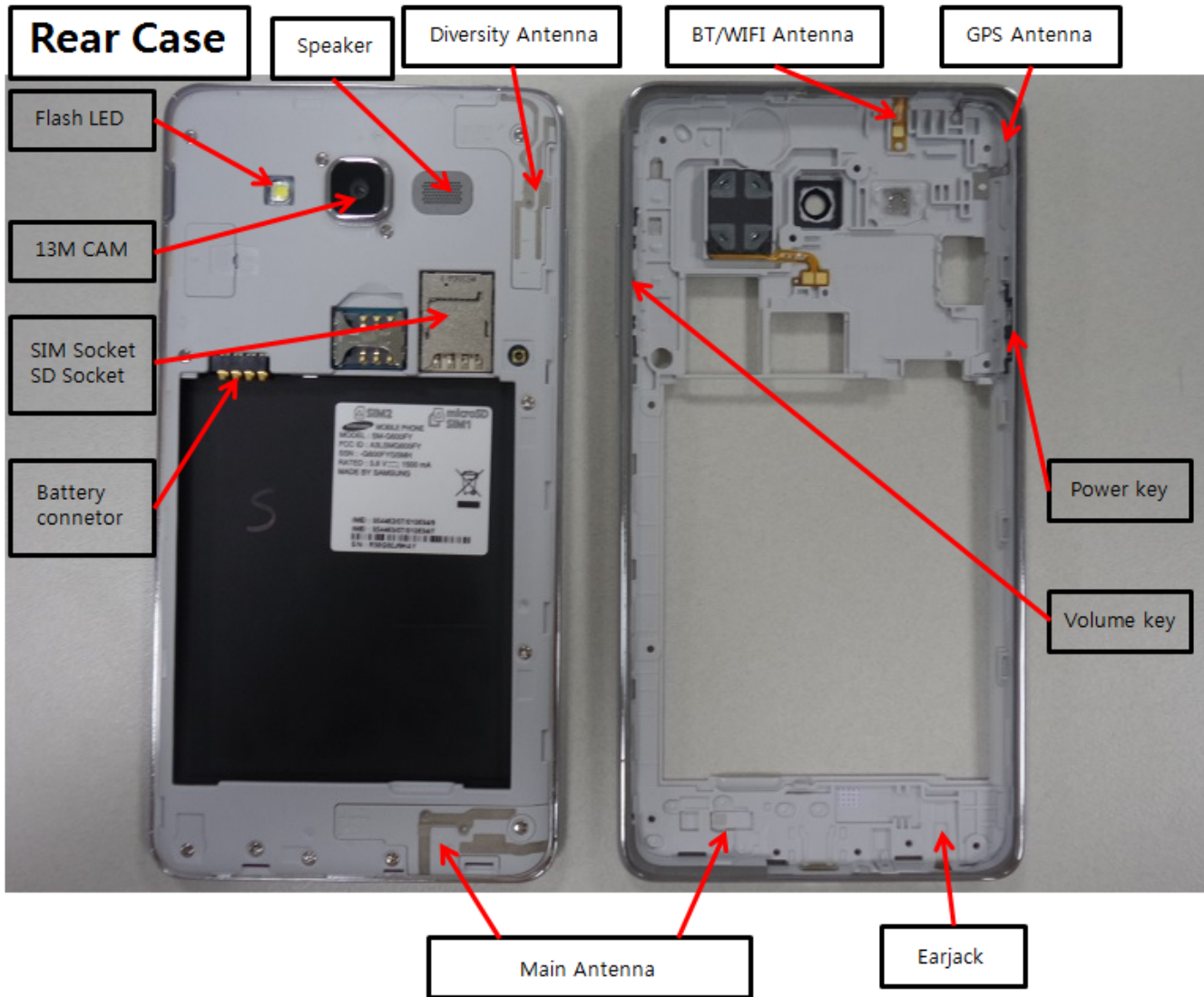

7. Level 2 Repair







7-1. Components on the Rear Case



7-2. Pre-requisite

	
Tweezers / Disass'y Stick / Screw Driver/ Dissolution jig.	Anti-static Gloves
	
OCTA Disassembly Holder	Anti-static Mat
	
Acryl Jig Rework Form	Glass Absorbers (2ea)
	
Tape Rework Form	Mobile Dryer

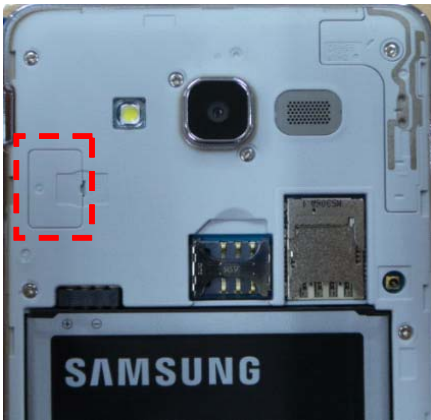
7-3. Parts which must be changed after repair

<p>A/S-TAPE REWORK SVC</p> <p>[GH81-13414A]</p>	
<p>A/S-TSP TOP SVC</p> <p>[GH81-13415A]</p>	
<p>A/S-TAPE OCTA REWORK SVC</p> <p>[GH81-13416A]</p>	
<p>THERMAL CONDUCTIVE ADHESIVE-LCD RIGHT [GH02-11421A]</p> <p>THERMAL CONDUCTIVE ADHESIV E-LCD LEFT [GH02-11420A]</p> <p>THERMAL CONDUCTIVE ADHESIV E-LCD BOT [GH02-11422A]</p>	  

7-4. Disassembly

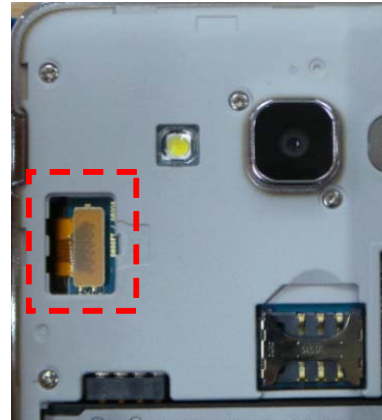
1

1) Detach the LCD Connector Cover.



2

1) Separate the LCD connector from the PBA.



※ **Caution** Be Careful not to Damage of FPCB

※ **Caution:** Be Careful not to Damage of FPCB

3



1) After heating for 5~10 minutes the device at 70~80 °C, take out the device from Mobile dryer.

4



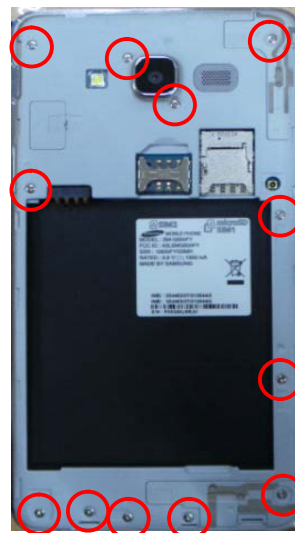
1) Detach the Bracket carefully from the LCD using Glass absorber and holder.
 ※ **Caution:** Be careful not to separate LCD from TSP.

5



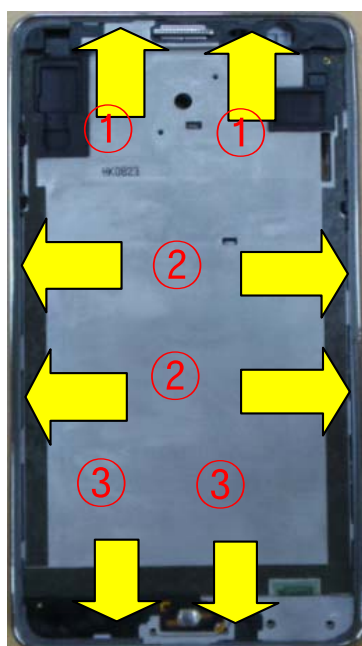
1) Remove all residue (i.e. LCD form tape, BRK tape) from LCD and BRK case.
*** Caution:** Be Careful not to Damage of FPCB

6



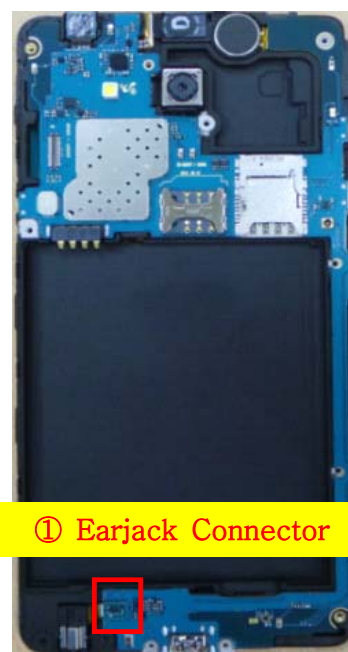
1) Unscrew 12 points on the REAR

7



1) Disassemble Bracket from the Rear case.
 (TOP → Left&Right → Bottom)

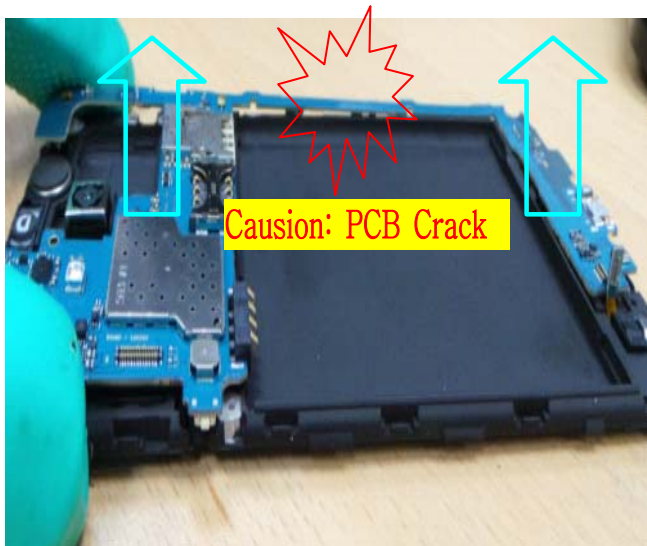
8



① Earjack Connector

1) Separate Earjack connector

5


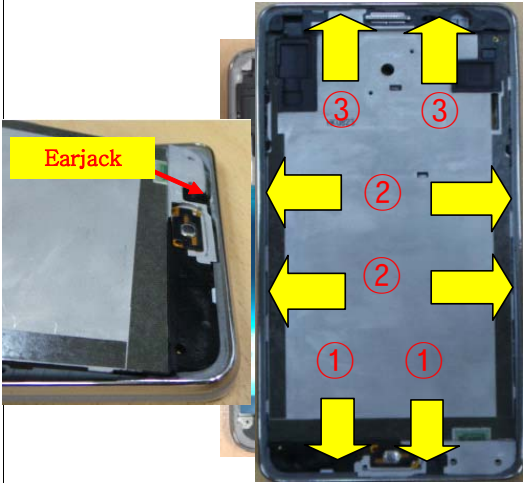




- 1) Remove vertically lifting the PBA.
(In order to prevent PCB Crack)

6



7-5. assembly

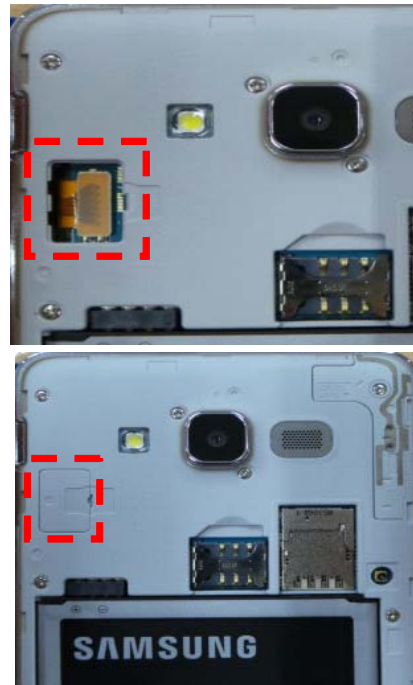
<div data-bbox="162 325 243 388" data-label="Text">1</div>  <p>① Earjack Connector</p>	<div data-bbox="820 325 901 388" data-label="Text">2</div>  <p>Earjack</p>
<p>1) Assemble Main PBA on Bracket 2) Assemble the earjack connector.</p>	<p>1) The earjack insert part from the Rear. 2) Assemble Bracket on the Rear case. (Bottom → Left&Right → Top)</p>
<div data-bbox="162 1087 243 1150" data-label="Text">3</div> 	<div data-bbox="820 1087 901 1150" data-label="Text">4</div> 
<p>1) Attach LCD tape on the LCD unit using LCD tape attaching JIG.</p>	<p>1) Remove all vinyl from Bracket, LCD outside.</p>

5



1) Assemble LCD unit on the Rear case.
Do not forget to connect LCD connector.

6



1) Assemble the LCD connector and LCD Connector Cover

7



1) Press OCTA Window using Window pressing JIG.